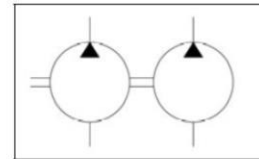




## Catalogue of double gear hydroelectric generator

HP 32/10,    HP 32/10 L  
 HP 40/10,    HP 40/10 L  
 HP 40/16,    HP 40/16 L



### Technical conditions:

Pressure on outlet of hydroel. generator: - nominal 16 MPa  
 - maximum \* 19 MPa

\* stated maximum pressure is only pressure peak of hydraulic circuit and it is not possible to consider this peak like working pressure.

Maximum time allowed for this overpressure are 3 seconds.

Pressure on input: - maximum 0,05 MPa  
 - minimum - 0,03 MPa

Surroundings temperature -30 to +60°C

Liquid temperature -30 to +80°C

Liquid - mineral oil for hydrostatic drives f.e.:  
 MOGUL OLN 22 TO 46  
 Shell Tellus 32  
 Shell Tellus 46  
 Madit OHHM 46

Operating range of hydraulic oil kinematic viscosity during 40°C 20 - 60 mm<sup>2</sup> s<sup>-1</sup>

Maximum kinematic viscosity (during start up) 1200 . mm<sup>2</sup> s<sup>-1</sup>

Filtration efficiency of filter insert 10 - 25 μm  
 $\beta_{25}$  75

Working position arbitrary

### Technical specifications

Signification of gear hydroelectric generator	Nominal geometric capacity cm <sup>3</sup> / rot.	Rotations 1/min			Nominal pressure MPa	During nominal rotations and nominal pressure	
		Min. *	Max. *	Nominal		input kW	overflow dm <sup>3</sup> /min
HP 32/10	32/10	600	2500	1500	16	18	43.2/13.7
HP 40/10	40/10	600	2500	1500	16	21,5	54/13,7
HP 40/16	40/16	600	2500	1500	16	23,8	54/22,5

\* Permanent operation on nominal pressure 16 MPa is allowed only in rotations range from 600 to 1 800 min<sup>-1</sup>. Out of this rotations range is allowed max. pressure 12 MPa.

**MARTING s.r.o. (Ltd.), NÁBREŽNÁ 2, SK - 038 61 VRÚTKY, SLOVAKIA**

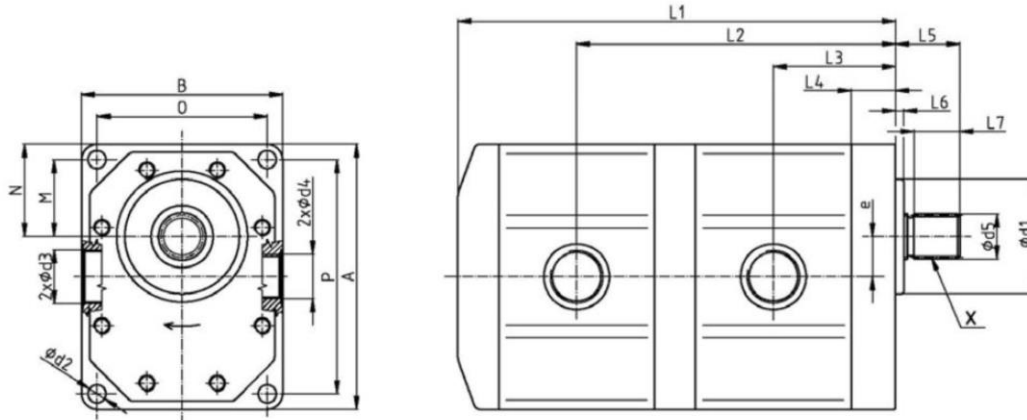
**tel.: ++421 43 4281 707-9, fax: ++421 43 4281 706, www.marting.sk**

**E-mail: marting@marting.sk**



## Main built-up measurements - involute shaft, side connection

**Pump types:** HP 32/10, HP 40/10, HP 40/16, HP 32/10 L, HP 40/10 L, HP 40/16 L  
(showed dextrorotary pump)



**Pump:** HP 32/10, HP 40/10, HP 40/16, HP 32/10 L, HP 40/10 L, HP 40/16 L

(measurements in mm)

Nominal geometric capacity	L1	L5	L4	L6	L7	e	B	A	M	N
32/10	229	41	27	5	28	24,5	123	162	47	56,5
40/10	235									
40/16	242									

Nominal geometric capacity	L3	L2	O	P	d5	d1	d2
32/10	72	176,4	104	143	Involute splines 38 x 1,5 tolerance of counterpart - H9	70 f8	11
40/10	75	182,4					
40/16	75	186,2					

**MARTING s.r.o. (Ltd.), NÁBREŽNÁ 2, SK - 038 61 VRÚTKY, SLOVAKIA**  
 tel.: ++421 43 4281 707-9, fax: ++421 43 4281 706, [www.marting.sk](http://www.marting.sk)  
 E-mail: [marting@marting.sk](mailto:marting@marting.sk)



## Main built-up measurements - involute shaft, side connection

### Pumps suction and displacement:

HP 32/10, HP 40/10  
HP 40/16  
HP 32/10 L, HP 40/10 L  
HP 40/16 L

	Thread	Depth of thread	Lightness Js
Suction d3	M 33 x 2	18	32 required
Displacement d4	M 27 x 2	16	20 recommended
Suction d6	M 27 x 2	15	20 required
Displacement d7	M 22 x 1,5	14	16 recommended

HP	32/10	L
Hydrogenerator	Nominal geometric capacity	Counter-clockwise (without signification = dextrorotary)

---

MARTING s.r.o. (Ltd.), NÁBREŽNÁ 2, SK - 038 61 VRÚTKY, SLOVAKIA  
tel.: ++421 43 4281 707-9, fax: ++421 43 4281 706, www.marting.sk  
E-mail: marting@marting.sk